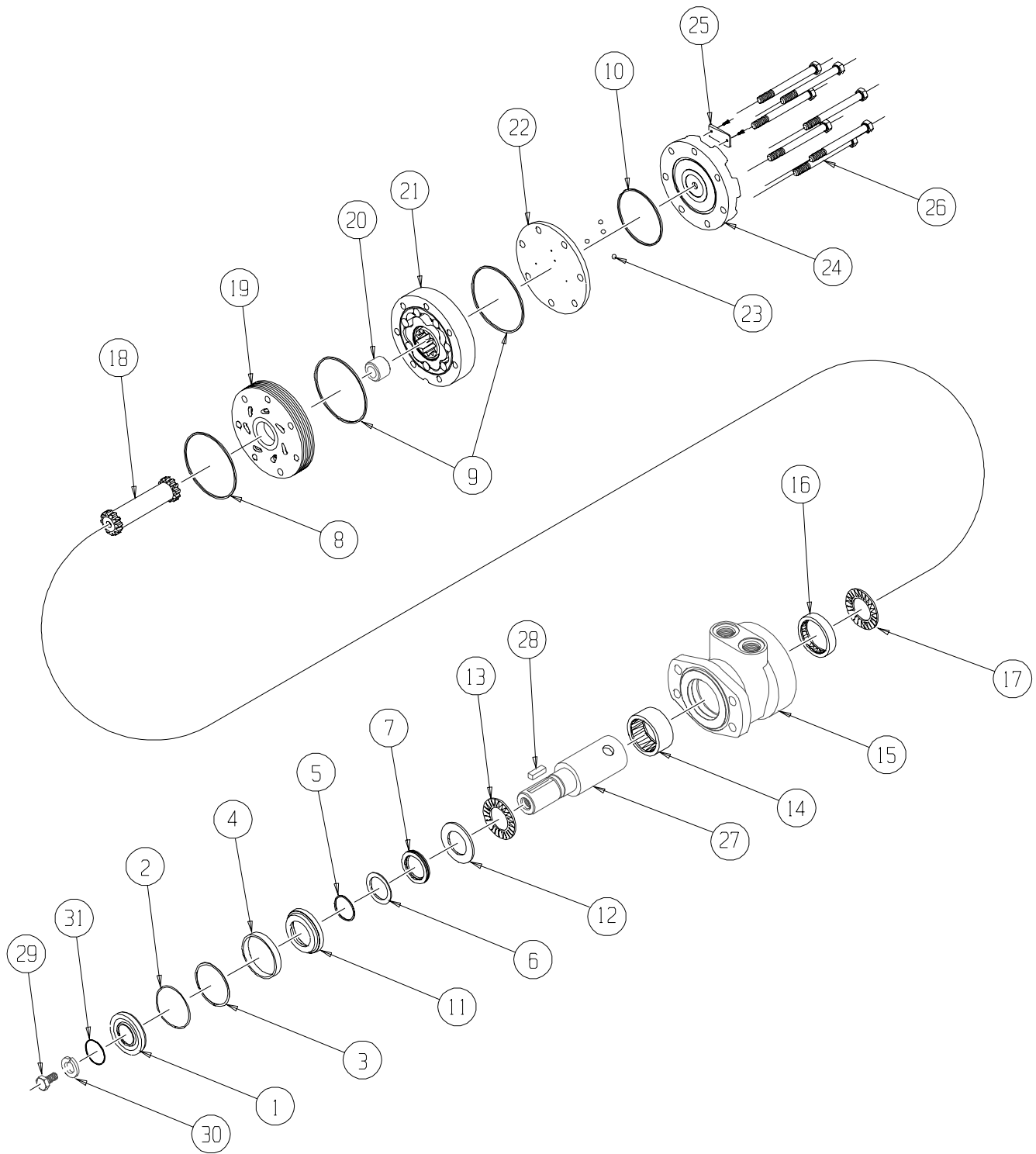


RE (500) Series



RE (500) SERIES MOTOR COMPONENTS

SEAL KIT 500444112B

| DESCRIPTION | EXP VIEW ITEM # | KIT # |
|--------------------|-----------------|--|
| DUST SEAL | 1 | ITEMS # 1-10, #14, #16 & EXCLUDER SEAL INCLUDED IN SEAL KIT 500444112B |
| WIRE RING | 2 | |
| METAL BACKUP SHIM | 3 | |
| HIGH PRESSURE SEAL | 4 | |
| METAL BACKUP SHIM | 5 | |
| POLYAMIDE SEAL (2) | 6 | |
| SHAFT SEAL (2) | 7 | |
| REAR HOUSING SEAL | 8 | |
| BODY SEALS (2) | 9 | |
| ENDCOVER SEAL | 10 | |
| EXCLUDER SEAL | NOT SHOWN | |
| SEAL CARRIER | 11 | ITEMS #11-12 INCLUDED IN SEAL KIT 500444003 |
| THRUST WASHER | 12 | |

MISCELLANEOUS KITS

| DESCRIPTION | EXPLODED VIEW ITEM # | KIT |
|---------------------------------|----------------------|------------|
| REAR THRUST BEARING | 17 | 500018059 |
| FRONT HOUSING BEARING (1" WIDE) | 14 | 500018003 |
| REAR HOUSING BEARING (.5" WIDE) | 16 | 500018002 |
| FORWARD MANIFOLD (CCW OR "0") | 19 | 500015006 |
| REVERSE MANIFOLD (CW OR "1") | 19 | 500015007 |
| BALANCE PLATE (3 BALLS INCLD) | 22 | 500012001 |
| STEEL BALL | 23 | 500018048 |
| ENDCOVER | 24 | 500016001 |
| FRONT THRUST BEARING | 13 | 500018252 |
| DUST SEAL | 1 | 500018006 |
| 1000 PSI RELIEF VALVE | NOT SHOWN | 500018228 |
| 2000 PSI RELIEF VALVE | NOT SHOWN | 500018231 |
| 3000 PSI RELIEF VALVE | NOT SHOWN | 500018221 |
| 1.00-20 UNEF SLOTTED NUT | NOT SHOWN | 500449304 |
| 1.00-20 UNEF SOLID NUT | NOT SHOWN | 500449303 |
| 1.00-20 UNEF LOCK NUT | NOT SHOWN | 300339303P |

ROTORS, DRIVE LINKS AND SPACERS, AND BOLTS

WHEN CHANGING MOTOR DISPLACEMENTS, A MATCHING ROTOR AND BOLT SET KIT MUST BE ORDERED. A NEW DRIVE LINK KIT MAY BE NECESSARY. DRIVE LINK SPACERS ARE INCLUDED IN DRIVE LINK KITS, BUT MAY ALSO BE ORDERED SEPERATELY BY USING THE DRIVE LINK SPACER KIT NUMBER.

| EXPLODED VIEW ITEM # | 21 | 21 | 18 | 20 | 26 |
|----------------------|--------------------|--------------------|----------------|-----------------------|--------------|
| DISPLACEMENT | STANDARD ROTOR KIT | FREETURN ROTOR KIT | DRIVE LINK KIT | DRIVE LINK SPACER KIT | BOLT SET KIT |
| 120 | 500087005 | 500087008 | 500014009 | --- | 500445006 |
| 160 | 500137005 | 500137011 | 500014009 | --- | 500445006 |
| 200 | 500167004 | 500167011 | 500014009 | 500018075 | 500445012 |
| 230 | 500147002 | 500147004 | 500014009 | 500018185 | 500445014 |
| 260 | 500227000 | 500227004 | 500014039 | --- | 500445014 |
| 300 | 500247005 | 500247011 | 500014007 | --- | 500445018 |
| 350 | 500207000 | 500207004 | 500014008 | 500018076 | 500445026 |
| 375 | 500307005 | 500307011 | 500014008 | --- | 500445024 |
| 470 | 500357003 | 500357005 | 500014008 | 500018076 | 500445026 |
| 540 | 500407005 | 500407011 | 500014008 | 500018077 | 500445032 |
| 750 | 500607005 | 500607011 | 500014008 | 500018078 | 500445045 |

HOUSING KITS

(EXPLODED VIEW ITEM #15)

STANDARD HOUSING KITS INCLUDE THE FRONT BEARING (#14) AND THE REAR BEARING (#16) INSTALLED IN THE HOUSING.

| DESCRIPTION | HOUSING KIT | DESCRIPTION | HOUSING KIT |
|---|-------------|---|-------------|
| #F31- 4-HOLE W/O PILOT & RS 4-HOLE BOLT PTRN. | 500130223 | #A58- 6-HOLE SAE "A" STYLE WITH 1/2" BSP.F | 500131923 |
| #W38- WHEEL MOUNT WITH 1/2" BSP.F | 500130523 | #W38- WHEEL MOUNT W/ RELIEF PORT W/ 1/2" BSP.F | 500133523 |
| #A38- 4-HOLE SAE "A" STYLE WITH 1/2" BSP.F | 500130623 | #A38- 4-HOLE SAE "A" W/ RLF. PRT & 1/2" BSP.F | 500133623 |
| #W31- WHEEL MOUNT WITH 7/8" O-RING | 500130723 | #W31- WHEEL MOUNT W/ RLF. PORT & 7/8" O-RING | 500133723 |
| #A31- 4-HOLE SAE "A" STYLE WITH 7/8" O-RING | 500130823 | #A31- 4-HOLE SAE "A" W/ VAL. CAVITY & 7/8" O-RING | 500133823 |
| #A11- 2-HOLE SAE "A" STYLE WITH 7/8" O-RING | 500131623 | #A51- 6-HOLE SAE "A" W/ VAL. CAVITY & 7/8" O-RING | 500134823 |
| #A18- 2-HOLE SAE "A" STYLE WITH 1/2" BSP.F | 500131723 | #A58- 6-HOLE SAE "A" W/ VAL. CAVITY & 1/2" BSP.F | 500134923 |
| #A51- 6-HOLE SAE "A" STYLE WITH 7/8" O-RING | 500131823 | | |

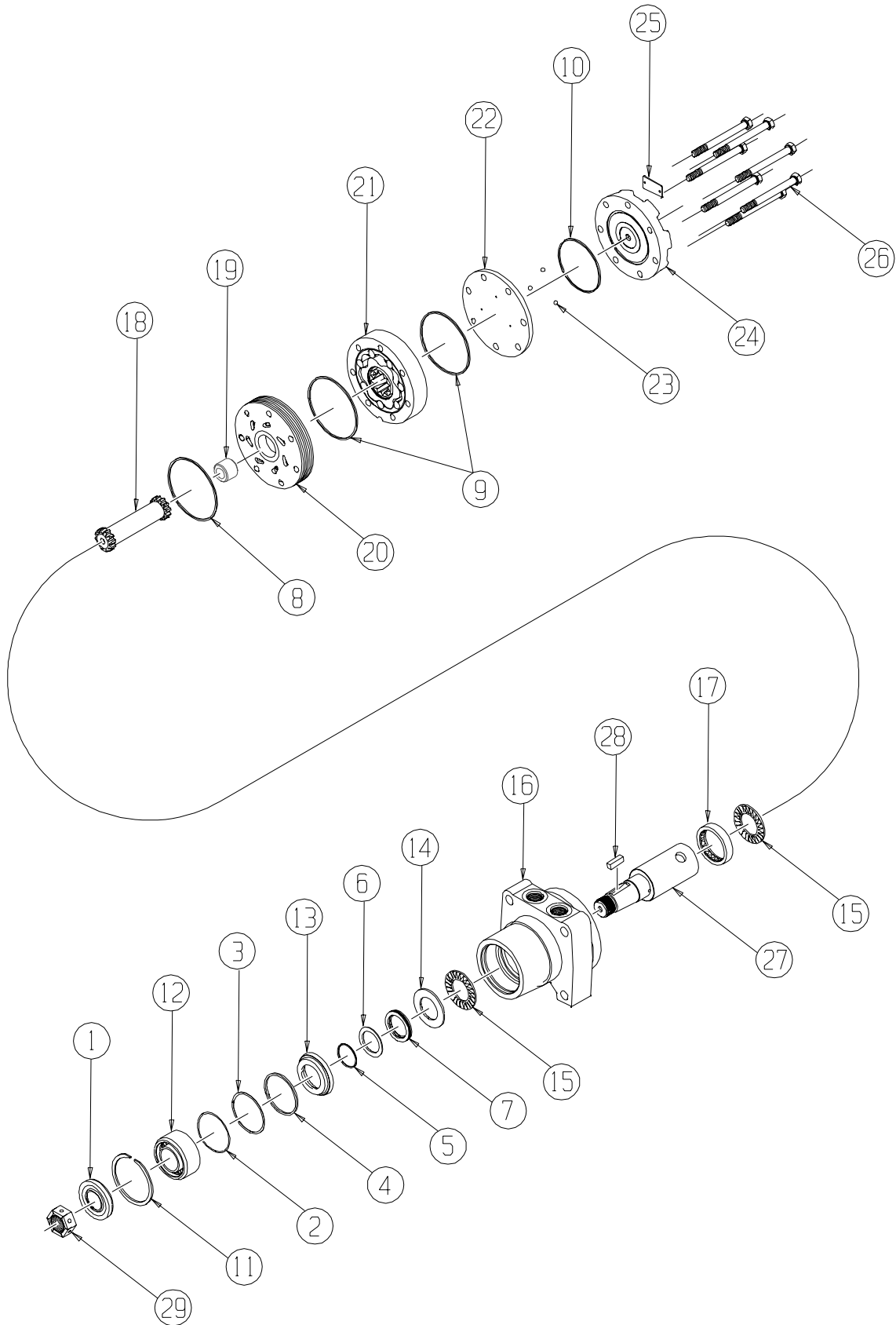
SHAFTS AND RELATED COMPONENTS KITS

SHAFT KITS COME WITH RELATED SHAFT COMPONENTS (i.e. keys, nuts, etc.)

TO ORDER INDIVIDUAL SHAFT COMPONENTS (i.e. keys, nuts, bolts, washers or wire rings) USE THE KIT NUMBER FOR EACH INDIVIDUAL PART

| EXPLODED VIEW ITEM # | 27 | 28 | NOT SHOWN | 29 | 30 | 31 |
|-------------------------------|-----------|-----------|-----------|-----------|------------|---------------|
| DESCRIPTION | SHAFT KIT | KEY KIT | NUT KIT | BOLT KIT | WASHER KIT | WIRE RING KIT |
| #02- 6-B SPLINE | 500011600 | --- | --- | --- | --- | --- |
| #22- 1-1/4" TAPERED | 500011300 | 500449101 | --- | --- | --- | --- |
| #20- 1-1/4" STRAIGHT | 500011200 | 500449102 | --- | 500449301 | 500449302 | 500449201 |
| #23- 14 TOOTH SPLINE | 500011101 | --- | SEE MISC. | --- | --- | 500449201 |
| #10- 1" STRAIGHT | 500011201 | 500449100 | KITS LIST | --- | --- | --- |
| #12- 25MM STRAIGHT | 500011109 | 500449104 | ABOVE | --- | --- | --- |
| #24- 19 TOOTH SPLINE | 500011102 | --- | --- | --- | --- | 500449201 |
| #21- 32MM STRAIGHT | 500011203 | 500449103 | --- | --- | --- | 500449201 |
| #19- 1" STRAIGHT EXTENDED | 500011202 | 500449100 | --- | --- | --- | --- |
| #01- 13 TOOTH SPLINE | 500011114 | --- | --- | --- | --- | --- |
| #29- 12 TOOTH SPLINE (BK) | 500011116 | --- | --- | --- | --- | --- |
| #26- 1-1/4" STR. NON-ANNEALED | 500011214 | --- | --- | --- | --- | --- |

RE (520) Series



RE (520) SERIES MOTOR COMPONENTS

SEAL KIT 500444001

| DESCRIPTION | EXP VIEW ITEM # | KIT |
|--------------------|-----------------|-----------------------|
| DUST SEAL | 1 | |
| SPLIT WIRE RING | 2 | ITEMS # 1-10, 13 & 14 |
| METAL BACKUP SHIM | 3 | INCLUDED IN SEAL KIT |
| HIGH PRESSURE SEAL | 4 | 500444001 |
| METAL BACKUP SHIM | 5 | |
| TEFLON BACKUP SHIM | 6 | |
| SHAFT SEAL | 7 | ITEMS # 1-10 |
| REAR HOUSING SEAL | 8 | INCLUDED IN SEAL KIT |
| BODY SEALS (2) | 9 | 500444002 |
| ENDCOVER SEAL | 10 | |
| SEAL CARRIER | 13 | ITEMS #13-14 |
| THRUST WASHER | 14 | INCLUDED IN SEAL KIT |
| | | 500444003 |

MISCELLANEOUS KITS

| DESCRIPTION | EXPLODED VIEW ITEM # | KIT |
|-------------------------------|----------------------|------------|
| RETAINING SNAP RING | 11 | 500018141 |
| 72MM BEARING | 12 | 500018098 |
| THRUST BEARING | 15 | 500018059 |
| REAR HOUSING BEARING | 17 | 500018002 |
| FORWARD MANIFOLD | 20 | 500015006 |
| REVERSE MANIFOLD | 20 | 500015007 |
| BALANCE PLATE (3 BALLS INCLD) | 22 | 500012001 |
| STEEL BALL (3) | 23 | 500018048 |
| ENDCOVER | 24 | 500016001 |
| DUST SEAL ONLY | 1 | 500018006 |
| 1000 PSI RELIEF VALVE | NOT SHOWN | 500018228 |
| 2000 PSI RELIEF VALVE | NOT SHOWN | 500018231 |
| 3000 PSI RELIEF VALVE | NOT SHOWN | 500018221 |
| 1.00-20 UNEF SLOTTED NUT | 29 | 500449304 |
| 1.00-20 UNEF SOLID NUT | 29 | 500449303 |
| 1.00-20 UNEF LOCK NUT | 29 | 300339303P |

ROTORS, DRIVE LINKS AND SPACERS, AND BOLTS

WHEN CHANGING MOTOR DISPLACEMENTS, A MATCHING ROTOR AND BOLT SET KIT MUST BE ORDERED. A NEW DRIVE LINK KIT MAY BE NECESSARY. DRIVE LINK SPACERS ARE INCLUDED IN DRIVE LINK KITS, BUT MAY ALSO BE ORDERED SEPERATELY BY USING THE DRIVE LINK SPACER KIT NUMBER.

| EXPLODED VIEW ITEM # | 21 | 21 | 18 | 19 | 26 |
|----------------------|--------------------|--------------------|----------------|-----------------------|--------------|
| DISPLACEMENT | STANDARD ROTOR KIT | FREETURN ROTOR KIT | DRIVE LINK KIT | DRIVE LINK SPACER KIT | BOLT SET KIT |
| 120 | 500087005 | 500087008 | 500014009 | --- | 500445006 |
| 160 | 500137005 | 500137011 | 500014009 | --- | 500445006 |
| 200 | 500167004 | 500167011 | 500014009 | 500018075 | 500445012 |
| 230 | 500147002 | 500147004 | 500014009 | 500018185 | 500445014 |
| 260 | 500227000 | 500227004 | 500014009 | 500018076 | 500445014 |
| 300 | 500247005 | 500247011 | 500014007 | --- | 500445018 |
| 350 | 500207000 | 500207004 | 500014008 | 500018076 | 500445026 |
| 375 | 500307005 | 500307011 | 500014008 | --- | 500445024 |
| 470 | 500357003 | 500357005 | 500014008 | 500018076 | 500445026 |
| 540 | 500407005 | 500407011 | 500014008 | 500018077 | 500445032 |
| 750 | 500607005 | 500607011 | 500014008 | 500018078 | 500445045 |

HOUSING KITS

(EXPLODED VIEW ITEM #16)

STANDARD HOUSING KITS INCLUDE BEARINGS (#12 & 17), DUST SEAL (#1) AND RETAINING SNAP RING (#11) INSTALLED IN THE HOUSING.

| DESCRIPTION | HOUSING KIT | DESCRIPTION | HOUSING KIT |
|--|-------------|--|-------------|
| #W31- WHEEL MOUNT W/ 7/8" O-RING | 500130928 | #A51- 6-HOLE SAE "A" STYLE W/ 7/8" O-RING PORTS | 500135228 |
| #W38- WHEEL MOUNT W/1/2" BSP.F | 500131428 | #A58- 6-HOLE SAE "A" STYLE W/ 1/2" BSP.F PORTS | 500135628 |
| #W31- WHEEL MOUNT W/7/8" O-RING W/VALVE CAVITY | 500133928 | #A57- 6-HOLE SAE "A" STYLE W/ MANIFOLD PORTS | 500135828 |
| #W38- WHEEL MOUNT W/1/2" BSP.F W/VALVE CAVITY | 500134428 | #A51- 6-HOLE SAE "A" STYLE W 7/8" O-RING W/VAL. CAVITY | 500138228 |

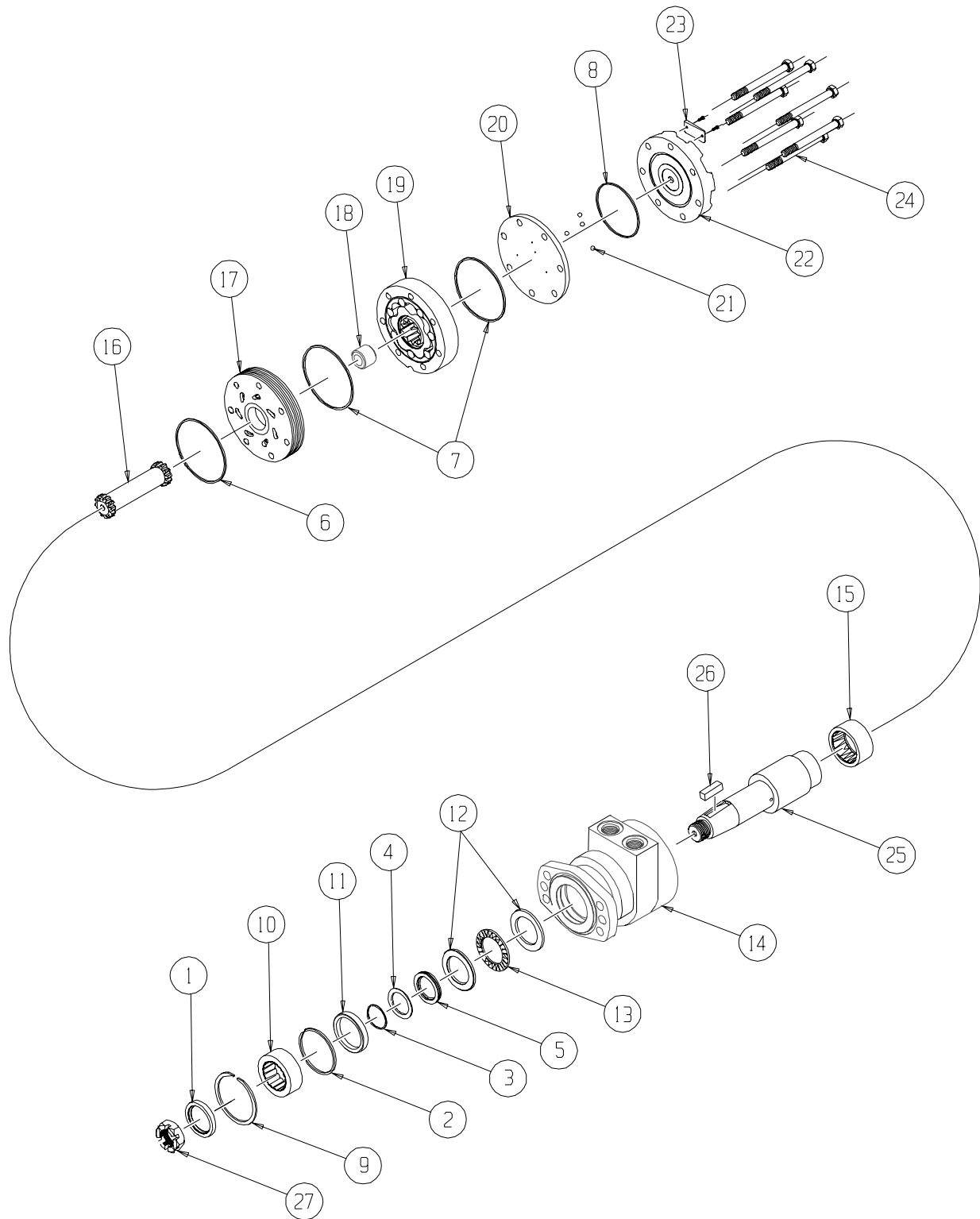
SHAFTS AND RELATED COMPONENTS KITS

SHAFT KITS COME WITH RELATED SHAFT COMPONENTS (i.e. keys, nuts, etc.)

TO ORDER INDIVIDUAL SHAFT COMPONENTS (i.e. keys, nuts, bolts, washers or wire rings) USE THE KIT NUMBER FOR EACH INDIVIDUAL PART.

| EXPLODED VIEW ITEM # | 27 | 28 | 29 | NOT SHOWN | NOT SHOWN | NOT SHOWN |
|----------------------|-----------|-----------|-----------|-----------|------------|---------------|
| DESCRIPTION | SHAFT KIT | KEY KIT | NUT KIT | BOLT KIT | WASHER KIT | WIRE RING KIT |
| #25- 1-1/4" TAPERED | 500011302 | 500449101 | | --- | --- | --- |
| #07- 1-1/4" STRAIGHT | 500011204 | 500119105 | | 500449301 | 500449302 | 500449201 |
| #09- 14 TOOTH SPLINE | 500011107 | --- | SEE MISC. | --- | --- | 500449201 |
| #08- 32MM STRAIGHT | 500011205 | 500449103 | KITS LIST | --- | --- | 500449201 |
| #03- 6B SPLINE | 500011602 | --- | ABOVE | --- | --- | --- |
| #15- 1" STRAIGHT | 500011206 | 500449100 | | --- | --- | --- |

RE (530) Series SAE "A" Flange



RE (530) SERIES "A" HOUSING MOTOR COMPONENTS

SEAL KIT 700666000

| DESCRIPTION | EXP. VIEW ITEM # | KIT |
|--------------------|------------------|-------------|
| DUST SEAL | 1 | |
| HIGH PRESSURE SEAL | 2 | |
| METAL BACKUP SHIM | 3 | ITEMS # 1-8 |
| TEFLON BACKUP SEAL | 4 | INCLUDED IN |
| SHAFT SEAL | 5 | SEAL KIT |
| REAR HOUSING SEAL | 6 | 700666000 |
| BODY SEALS (2) | 7 | |
| ENDCOVER SEAL | 8 | |

MISCELLANEOUS KITS

| DESCRIPTION | EXP. VIEW ITEM # | KIT |
|-------------------------------|------------------|-----------|
| RETAINING SNAP RING | 9 | 500018141 |
| 1.5" BEARING | 10 | 500018241 |
| SEAL CARRIER | 11 | 500018238 |
| THRUST WASHER | 12 | 700018041 |
| THRUST BEARING | 13 | 700018033 |
| REAR HOUSING BEARING | 15 | 700018012 |
| FORWARD MANIFOLD (CCW OR "0") | 17 | 500015006 |
| REVERSE MANIFOLD (CW OR "1") | 17 | 500015007 |
| BALANCE PLATE (3 BALLS INCLD) | 20 & 21 | 500012001 |
| STEEL BALL | 21 | 500018048 |
| ENDCOVER | 22 | 500016001 |
| 1000 PSI RELIEF VALVE | NOT SHOWN | 500018228 |
| 2000 PSI RELIEF VALVE | NOT SHOWN | 500018231 |
| 3000 PSI RELIEF VALVE | NOT SHOWN | 500018221 |
| 1.125-18 UNEF SLOTTED HEX NUT | 30 | 700018038 |
| 1.125-18 UNEF SOLID HEX NUT | 30 | 700018054 |

ROTORS, DRIVE LINKS AND SPACERS, AND BOLTS

WHEN CHANGING MOTOR DISPLACEMENTS, A MATCHING ROTOR AND BOLT SET KIT MUST BE ORDERED. A NEW DRIVE LINK KIT MAY BE NECESSARY. DRIVE LINK SPACERS ARE INCLUDED IN DRIVE LINK KITS, BUT MAY ALSO BE ORDERED SEPERATELY BY USING THE DRIVE LINK SPACER KIT NUMBER

| EXPLODED VIEW ITEM # | 19 | 19 | 16 | 18 | 24 |
|----------------------|--------------------|--------------------|----------------|-----------------------|--------------|
| DISPLACEMENT | STANDARD ROTOR KIT | FREETURN ROTOR KIT | DRIVE LINK KIT | DRIVE LINK SPACER KIT | BOLT SET KIT |
| 120 | 500087005 | 500087008 | 500014009 | --- | 500445006 |
| 160 | 500137005 | 500137011 | 500014009 | --- | 500445006 |
| 200 | 500167004 | 500167011 | 500014009 | 500018075 | 500445012 |
| 230 | 500147002 | 500147004 | 500014009 | 500018185 | 500445014 |
| 260 | 500227000 | 500227004 | 500014009 | 500018076 | 500445014 |
| 300 | 500247005 | 500247011 | 500014007 | --- | 500445018 |
| 350 | 500207000 | 500207004 | 500014008 | 500018076 | 500445026 |
| 375 | 500307005 | 500307011 | 500014008 | --- | 500445024 |
| 470 | 500357003 | 500357005 | 500014008 | 500018076 | 500445026 |
| 540 | 500407005 | 500407011 | 500014008 | 500018077 | 500445032 |
| 750 | 500607005 | 500607011 | 500014008 | 500018078 | 500445045 |

HOUSING KITS

(EXPLODED VIEW ITEM #14)

STANDARD HOUSING KITS INCLUDE REAR BEARING (#15) INSTALLED IN THE HOUSING.

| DESCRIPTION | HOUSING KIT |
|---|-------------|
| #A51- 6-HOLE SAE "A" STYLE FLANGE W/ 7/8" O-RING PORTS | 500136228 |
| #A51- 6-HOLE SAE "A" STYLE FLANGE W/ 7/8" O-RING PORTS & VALVE CAVITY | 500139228 |
| #A58- 6-HOLE SAE "A" STYLE FLANGE W/ 1/2" BSP.F PORTS | 500136628 |
| #A58- 6-HOLE SAE "A" STYLE FLANGE W/ 1/2" BSP.F & VALVE CAVITY | 500139628 |

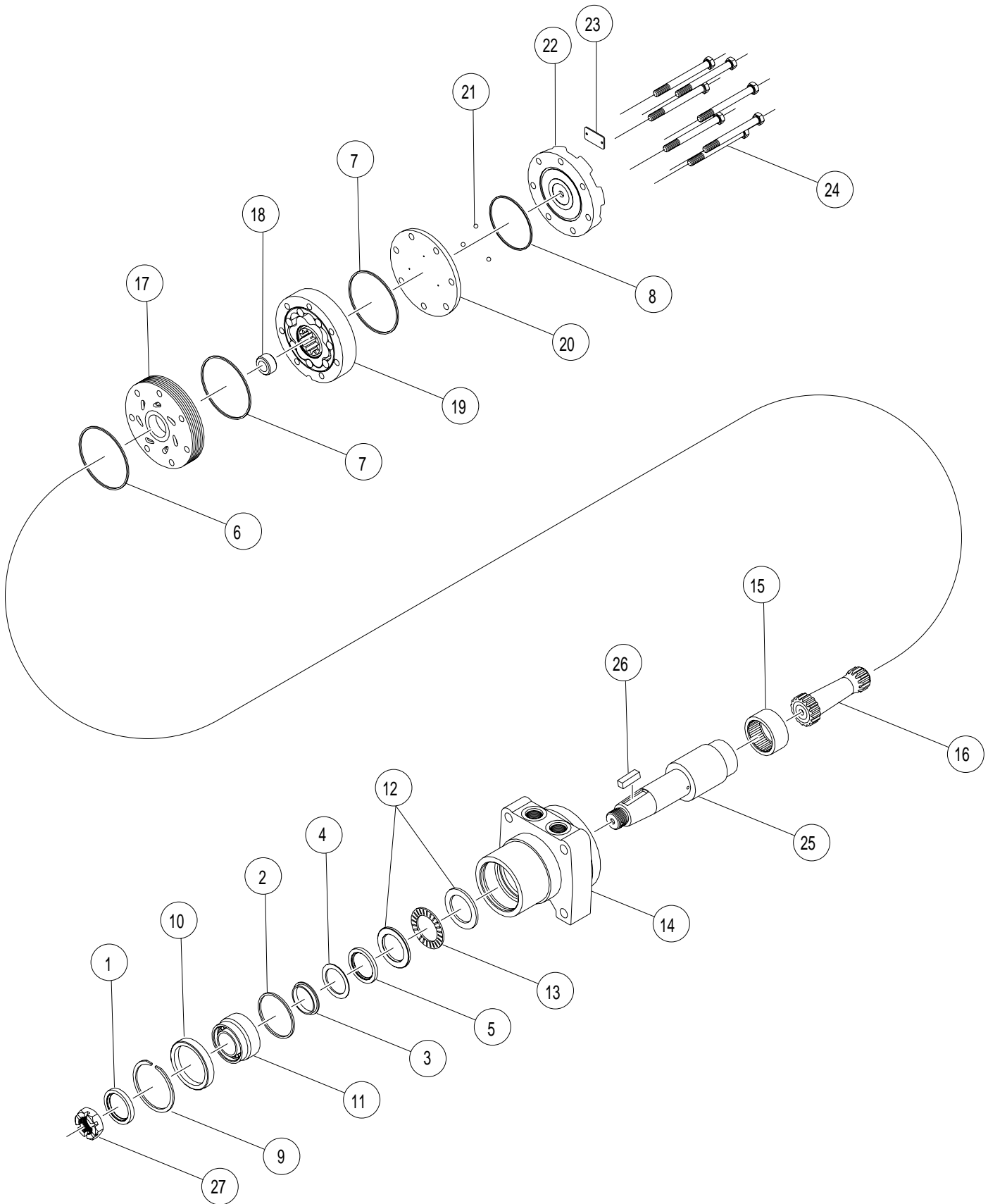
SHAFTS AND RELATED COMPONENTS KITS

SHAFT KITS COME WITH RELATED SHAFT COMPONENTS (i.e. keys, nuts, etc.)

TO ORDER INDIVIDUAL SHAFT COMPONENTS (i.e. keys, nuts, bolts, washers or wire rings) USE THE KIT NUMBER FOR EACH INDIVIDUAL PART.

| EXPLODED VIEW ITEM # | 25 | 26 | 27 | NOT SHOWN |
|----------------------|-----------|-----------|-----------|---------------|
| DESCRIPTION | SHAFT KIT | KEY KIT | NUT KIT | WIRE RING KIT |
| #30- 1-1/2" STRAIGHT | 500011213 | 300339105 | SEE MISC. | 500449200 |
| #31- 1-1/2" TAPERED | 500011305 | 500449105 | KITS LIST | --- |
| #27- 35MM STRAIGHT | 500011219 | 500449103 | | --- |

RE (530) Series "R" Housing



RE (530) SERIES "R" HOUSING MOTOR COMPONENTS

SEAL KIT 700666000

| DESCRIPTION | EXP VIEW ITEM # | KIT |
|--------------------|-----------------|---|
| DUST SEAL | 1 | ITEMS # 1-8 INCLUDED IN SEAL KIT 700666000 |
| HIGH PRESSURE SEAL | 2 | |
| METAL BACKUP SHIM | 3 | |
| TEFLON BACKUP SEAL | 4 | |
| SHAFT SEAL | 5 | |
| REAR HOUSING SEAL | 6 | |
| BODY SEALS (2) | 7 | |
| ENDCOVER SEAL | 8 | |

MISCELLANEOUS KITS

| DESCRIPTION | EXPLODED VIEW ITEM # | KIT |
|-------------------------------|----------------------|-----------|
| RETAINING SNAP RING | 9 | 700018013 |
| BEARING SPACER | 10 | 700018085 |
| 1.5" BEARING | 11 | 300018021 |
| THRUST WASHER | 12 | 700018041 |
| THRUST BEARING | 13 | 700018033 |
| REAR HOUSING BEARING | 15 | 700018012 |
| FORWARD MANIFOLD (CCW OR "0") | 17 | 500015006 |
| REVERSE MANIFOLD (CW OR "1") | 17 | 500015007 |
| BALANCE PLATE (3 BALLS INCLD) | 20 & 21 | 500012001 |
| STEEL BALL | 21 | 500018048 |
| ENDCOVER | 22 | 500016001 |
| 1000 PSI RELIEF VALVE | NOT SHOWN | 500018228 |
| 2000 PSI RELIEF VALVE | NOT SHOWN | 500018231 |
| 3000 PSI RELIEF VALVE | NOT SHOWN | 500018221 |
| 1.125-18 UNEF SLOTTED HEX NUT | 28 | 700018038 |
| 1.125-18 UNEF SOLID HEX NUT | 28 | 700018054 |
| DUST SEAL ONLY | 1 | 300018006 |

ROTORS, DRIVE LINKS AND SPACERS, AND BOLTS

WHEN CHANGING MOTOR DISPLACEMENTS, A MATCHING ROTOR AND BOLT SET KIT MUST BE ORDERED. A NEW DRIVE LINK KIT MAY BE NECESSARY. DRIVE LINK SPACERS ARE INCLUDED IN DRIVE LINK KITS, BUT MAY ALSO BE ORDERED SEPERATELY BY USING THE DRIVE LINK SPACER KIT NUMBER.

| EXPLODED VIEW ITEM # | 19 | 19 | 16 | 18 | 24 |
|----------------------|--------------------|--------------------|----------------|-----------------------|--------------|
| DISPLACEMENT | STANDARD ROTOR KIT | FREETURN ROTOR KIT | DRIVE LINK KIT | DRIVE LINK SPACER KIT | BOLT SET KIT |
| 120 | 500087005 | 500087008 | 500014009 | --- | 500445006 |
| 160 | 500137005 | 500137011 | 500014009 | --- | 500445006 |
| 200 | 500167004 | 500167011 | 500014009 | 500018075 | 500445012 |
| 230 | 500147002 | 500147004 | 500014009 | 500018185 | 500445014 |
| 260 | 500227000 | 500227004 | 500014039 | --- | 500445014 |
| 300 | 500247005 | 500247011 | 500014007 | --- | 500445018 |
| 350 | 500207000 | 500207004 | 500014008 | 500018076 | 500445026 |
| 375 | 500307005 | 500307011 | 500014008 | --- | 500445024 |
| 470 | 500357003 | 500357005 | 500014008 | 500018076 | 500445026 |
| 540 | 500407005 | 500407011 | 500014008 | 500018077 | 500445032 |
| 750 | 500607005 | 500607011 | 500014008 | 500018078 | 500445045 |

HOUSING KITS (EXPLODED VIEW ITEM #14)

STANDARD HOUSING KITS INCLUDE REAR BEARING (#15) INSTALLED IN THE HOUSING.

| DESCRIPTION | HOUSING KIT |
|---|-------------|
| #R31- WHEEL MOUNT WITH 7/8" O-RING | 500132028 |
| #R31- WHEEL MOUNT WITH 7/8" O-RING AND VALVE CAVITY | 500135028 |

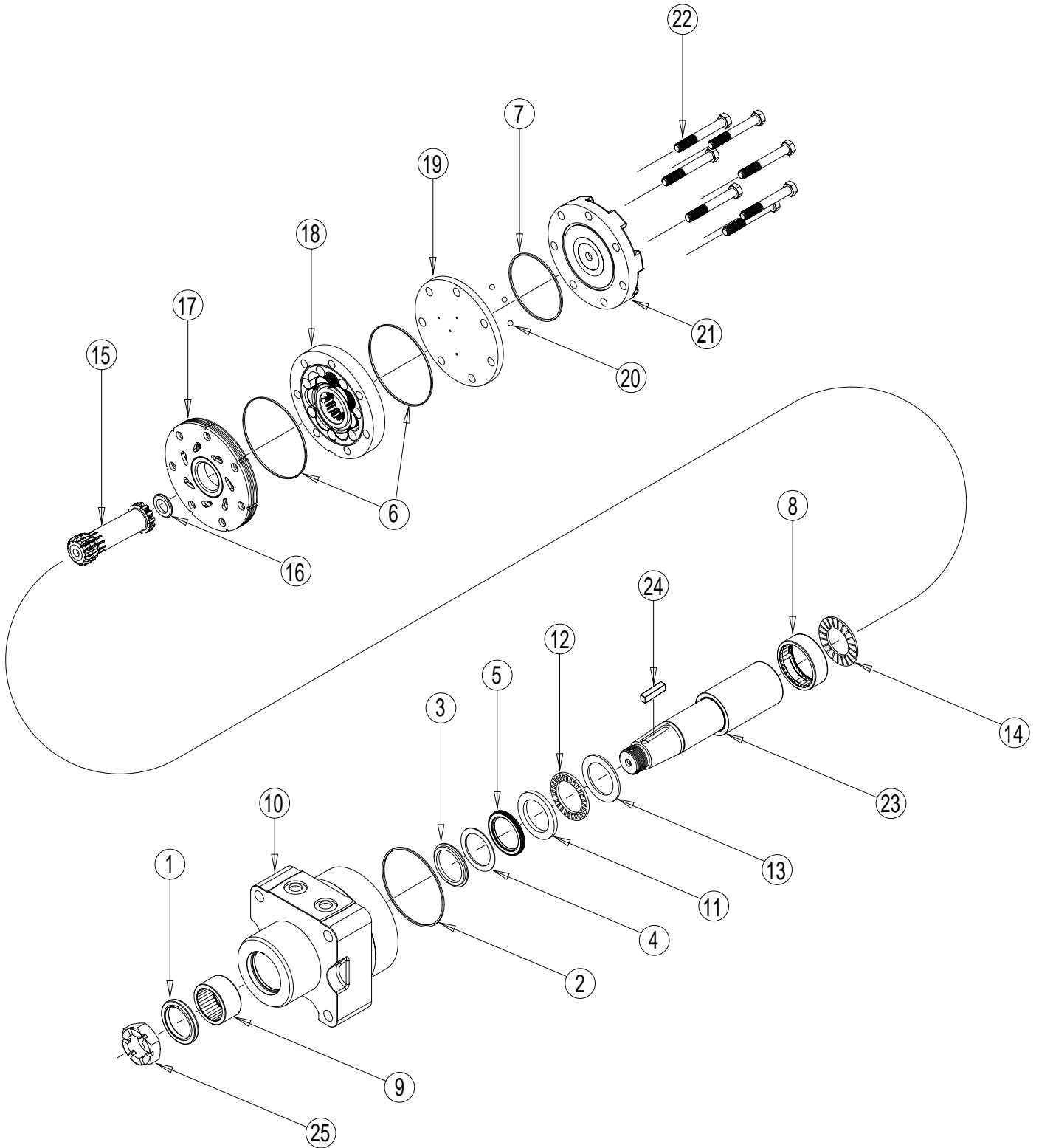
SHAFTS AND RELATED COMPONENTS KITS

SHAFT KITS COME WITH RELATED SHAFT COMPONENTS (i.e. keys, nuts, etc.)

TO ORDER INDIVIDUAL SHAFT COMPONENTS (i.e. keys, nuts, bolts, washers or wire rings) USE THE KIT NUMBER FOR EACH INDIVIDUAL PART.

| EXPLODED VIEW ITEM # | 25 | 26 | 27 | NOT SHOWN |
|----------------------|-----------|-----------|-----------|---------------|
| DESCRIPTION | SHAFT KIT | KEY KIT | NUT KIT | WIRE RING KIT |
| #30- 1-1/2" STRAIGHT | 500011213 | 300339105 | SEE MISC. | 500449200 |
| #31- 1-1/2" TAPERED | 500011305 | 500449105 | KITS LIST | --- |

RE (530) Series "T" Housing



RE (530) SERIES "T" HOUSING MOTOR COMPONENTS

MISCELLANEOUS KITS

| DESCRIPTION | EXP. VIEW ITEM # | KIT |
|----------------------|------------------|-------------|
| DUST SEAL | 1 | |
| HOUSING SEAL | 2 | |
| BACK UP RING | 3 | |
| BACK UP | 4 | ITEMS # 1-8 |
| SHAFT SEAL | 5 | INCLUDED IN |
| BODY SEALS (2) | 6 | SEAL KIT |
| ENDCOVER SEAL | 7 | 500444004 |
| REAR HOUSING BEARING | 8 | |

| DESCRIPTION | EXPLODED VIEW ITEM # | KIT |
|-------------------------------|----------------------|-----------|
| FRONT HOUSING BEARING | 9 | 530018000 |
| FRONT THRUST WASHER | 11 | 500018283 |
| FRONT THRUST BEARING | 12 | 500018282 |
| THRUST WASHER | 13 | 300018002 |
| REAR THRUST BEARING | 14 | 500018059 |
| FORWARD MANIFOLD (CCW OR "0") | 17 | 500015006 |
| REVERSE MANIFOLD (CW OR "1") | 17 | 500015007 |
| BALANCE PLATE (3 BALLS INCLD) | 19 | 500012001 |
| STEEL BALL | 20 | 500018048 |
| ENDCOVER | 21 | 500016001 |
| 1.125-18 UNEF SLOTTED HEX NUT | 25 | 500449300 |
| 1.125-18 UNEF SOLID HEX NUT | 25 | 700018054 |

ROTORS, DRIVE LINKS AND SPACERS, AND BOLTS

WHEN CHANGING MOTOR DISPLACEMENTS, A MATCHING ROTOR AND BOLT SET KIT MUST BE ORDERED. A NEW DRIVE LINK KIT MAY BE NECESSARY. DRIVE LINK SPACERS ARE INCLUDED IN DRIVE LINK KITS, BUT MAY ALSO BE ORDERED SEPERATELY BY USING THE DRIVE LINK SPACER KIT NUMBER.

| EXPLODED VIEW ITEM # | 18 | 18 | 15 | 16 | 22 |
|----------------------|--------------------|--------------------|----------------|-----------------------|--------------|
| DISPLACEMENT | STANDARD ROTOR KIT | FREETURN ROTOR KIT | DRIVE LINK KIT | DRIVE LINK SPACER KIT | BOLT SET KIT |
| 120 | 500087005 | 500087008 | 500014009 | --- | 500445006 |
| 160 | 500137005 | 500137011 | 500014009 | --- | 500445006 |
| 200 | 500167004 | 500167011 | 500014009 | 500018075 | 500445012 |
| 230 | 500147002 | 500147004 | 500014009 | 500018185 | 500445014 |
| 260 | 500227000 | 500227004 | 500014009 | 500018076 | 500445014 |
| 300 | 500247005 | 500247011 | 500014007 | --- | 500445018 |
| 350 | 500207000 | 500207004 | 500014008 | 500018076 | 500445026 |
| 375 | 500307005 | 500307011 | 500014008 | --- | 500445024 |
| 470 | 500357003 | 500357005 | 500014008 | 500018076 | 500445026 |
| 540 | 500407005 | 500407011 | 500014008 | 500018077 | 500445032 |
| 750 | 500607005 | 500607011 | 500014008 | 500018078 | 500445045 |

HOUSING KITS

(EXPLODED VIEW ITEM #10)

| DESCRIPTION | HOUSING KIT |
|---|-------------|
| #T31- WHEEL MOTOR WITH 7/8" O-RING | 530013002 |
| #T35- WHEEL MOTOR WITH 9/16" O-RING PORTS | 530013000 |
| #T38- WHEEL MOTOR WITH 1/2" BSP.F | 530013001 |

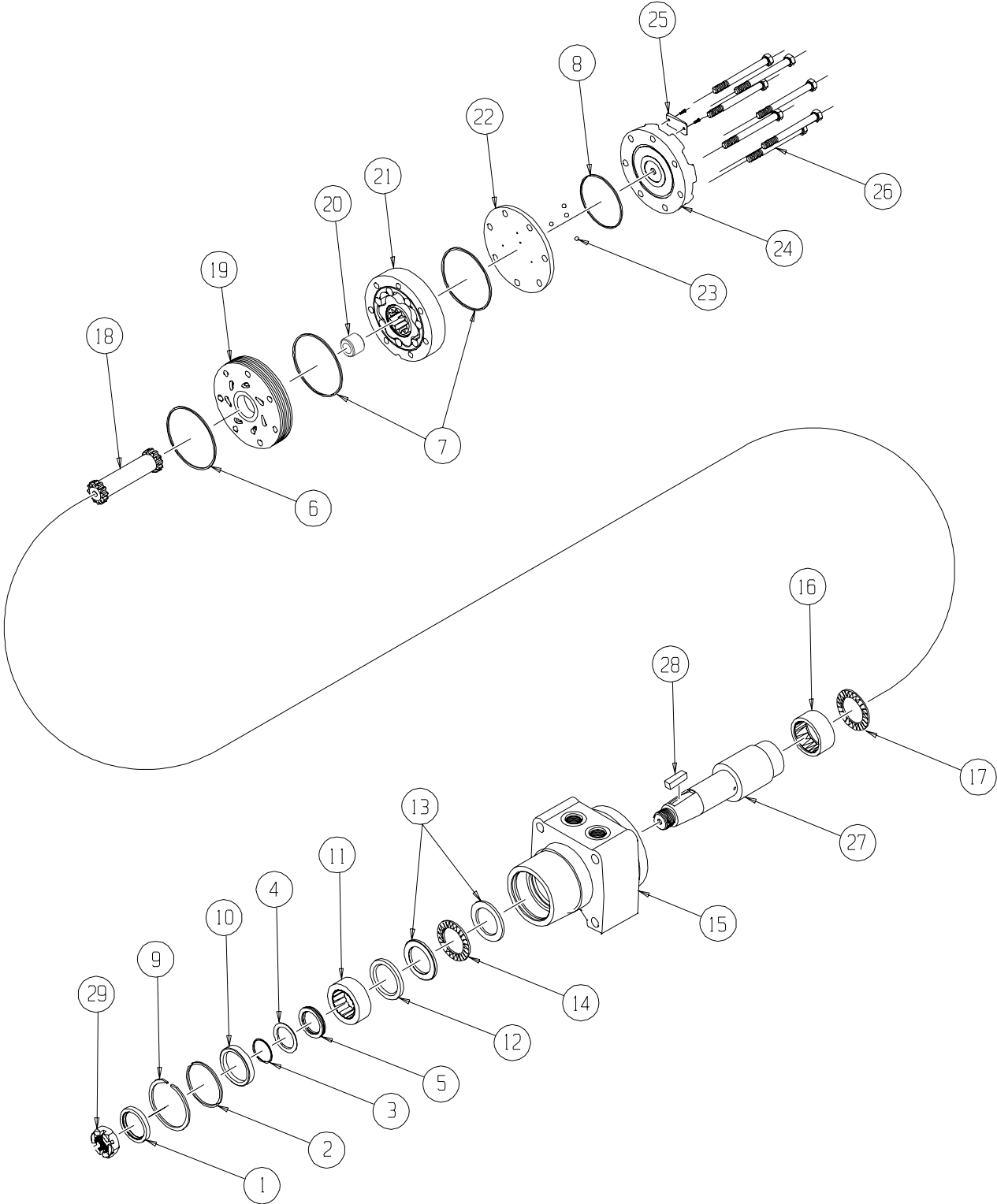
SHAFTS AND RELATED COMPONENTS KITS

SHAFT KITS COME WITH RELATED SHAFT COMPONENTS (i.e. keys, nuts, etc.)

TO ORDER INDIVIDUAL SHAFT COMPONENTS (i.e. keys, nuts, bolts, washers or wire rings) USE THE KIT NUMBER FOR EACH INDIVIDUAL PART.

| EXPLODED VIEW ITEM # | 23 | 24 | 25 |
|----------------------|-----------|-----------|-----------|
| DESCRIPTION | SHAFT KIT | KEY KIT | NUT KIT |
| #31- 1-1/2" TAPERED | 500011311 | 500449105 | SEE MISC. |

RE (530) Series



RE (530) SERIES "W" HOUSING MOTOR COMPONENTS

SEAL KIT 700666000

| DESCRIPTION | EXP. VIEW ITEM # | KIT |
|--------------------|------------------|-------------|
| DUST SEAL | 1 | |
| HIGH PRESSURE SEAL | 2 | |
| METAL BACKUP SHIM | 3 | |
| TEFLON BACKUP SEAL | 4 | ITEMS # 1-8 |
| SHAFT SEAL | 5 | INCLUDED IN |
| REAR HOUSING SEAL | 6 | SEAL KIT |
| BODY SEALS (2) | 7 | 700666000 |
| ENDCOVER SEAL | 8 | |

MISCELLANEOUS KITS

| DESCRIPTION | EXPLODED VIEW ITEM # | KIT |
|---------------------------------|----------------------|-----------|
| RETAINING SNAP RING | 9 | 500018249 |
| SEAL CARRIER | 10 | 500018238 |
| 1.5" BEARING | 11 | 500018242 |
| BEARING SPACER | 12 | 500018248 |
| THRUST WASHER | 13 | 700018041 |
| FRONT THRUST BEARING | 14 | 700018033 |
| REAR HOUSING BEARING | 16 | 700018012 |
| REAR THRUST BEARING | 17 | 500018059 |
| FORWARD MANIFOLD (CCW OR "0") | 19 | 500015006 |
| REVERSE MANIFOLD (CW OR "1") | 19 | 500015007 |
| BALANCE PLATE (3 BALLS INCLD) | 22 & 23 | 500012001 |
| STEEL BALL | 23 | 500018048 |
| ENDCOVER | 24 | 500016001 |
| 1000 PSI RELIEF VALVE | NOT SHOWN | 500018228 |
| 2000 PSI RELIEF VALVE | NOT SHOWN | 500018231 |
| 3000 PSI RELIEF VALVE | NOT SHOWN | 500018221 |
| 1.125-18 UNEF SLOTTED HEX NUT | 30 | 700018038 |
| 1.125-18 UNEF SOLID HEX NUT | 30 | 700018054 |
| M24 X 1.5 SLOTTED HEX NUT (#46) | 30 | 500449306 |

ROTORS, DRIVE LINKS AND SPACERS, AND BOLTS

WHEN CHANGING MOTOR DISPLACEMENTS, A MATCHING ROTOR AND BOLT SET KIT MUST BE ORDERED. A NEW DRIVE LINK KIT MAY BE NECESSARY. DRIVE LINK SPACERS ARE INCLUDED IN DRIVE LINK KITS, BUT MAY ALSO BE ORDERED SEPERATELY BY USING THE DRIVE LINK SPACER KIT NUMBER

| EXPLODED VIEW ITEM # | 21 | 21 | 18 | 20 | 26 |
|----------------------|--------------------|--------------------|----------------|-----------------------|--------------|
| DISPLACEMENT | STANDARD ROTOR KIT | FREETURN ROTOR KIT | DRIVE LINK KIT | DRIVE LINK SPACER KIT | BOLT SET KIT |
| 120 | 500087005 | 500087008 | 500014009 | --- | 500445006 |
| 160 | 500137005 | 500137011 | 500014009 | --- | 500445006 |
| 200 | 500167004 | 500167011 | 500014009 | 500018075 | 500445012 |
| 230 | 500147002 | 500147004 | 500014009 | 500018185 | 500445014 |
| 260 | 500227000 | 500227004 | 500014009 | 500018076 | 500445014 |
| 300 | 500247005 | 500247011 | 500014007 | --- | 500445018 |
| 350 | 500207000 | 500207004 | 500014008 | 500018076 | 500445026 |
| 375 | 500307005 | 500307011 | 500014008 | --- | 500445024 |
| 470 | 500357003 | 500357005 | 500014008 | 500018076 | 500445026 |
| 540 | 500407005 | 500407011 | 500014008 | 500018077 | 500445032 |
| 750 | 500607005 | 500607011 | 500014008 | 500018078 | 500445045 |

HOUSING KITS

(EXPLODED VIEW ITEM #15)

STANDARD HOUSING KITS INCLUDE REAR BEARING (#17) INSTALLED IN THE HOUSING.

| DESCRIPTION | HOUSING KIT |
|--|-------------|
| #W31- WHEEL MOTOR WITH 7/8" O-RING PORTS | 500136728 |
| #W38- WHEEL MOTOR WITH 1/2" BSP.F PORTS | 500137728 |

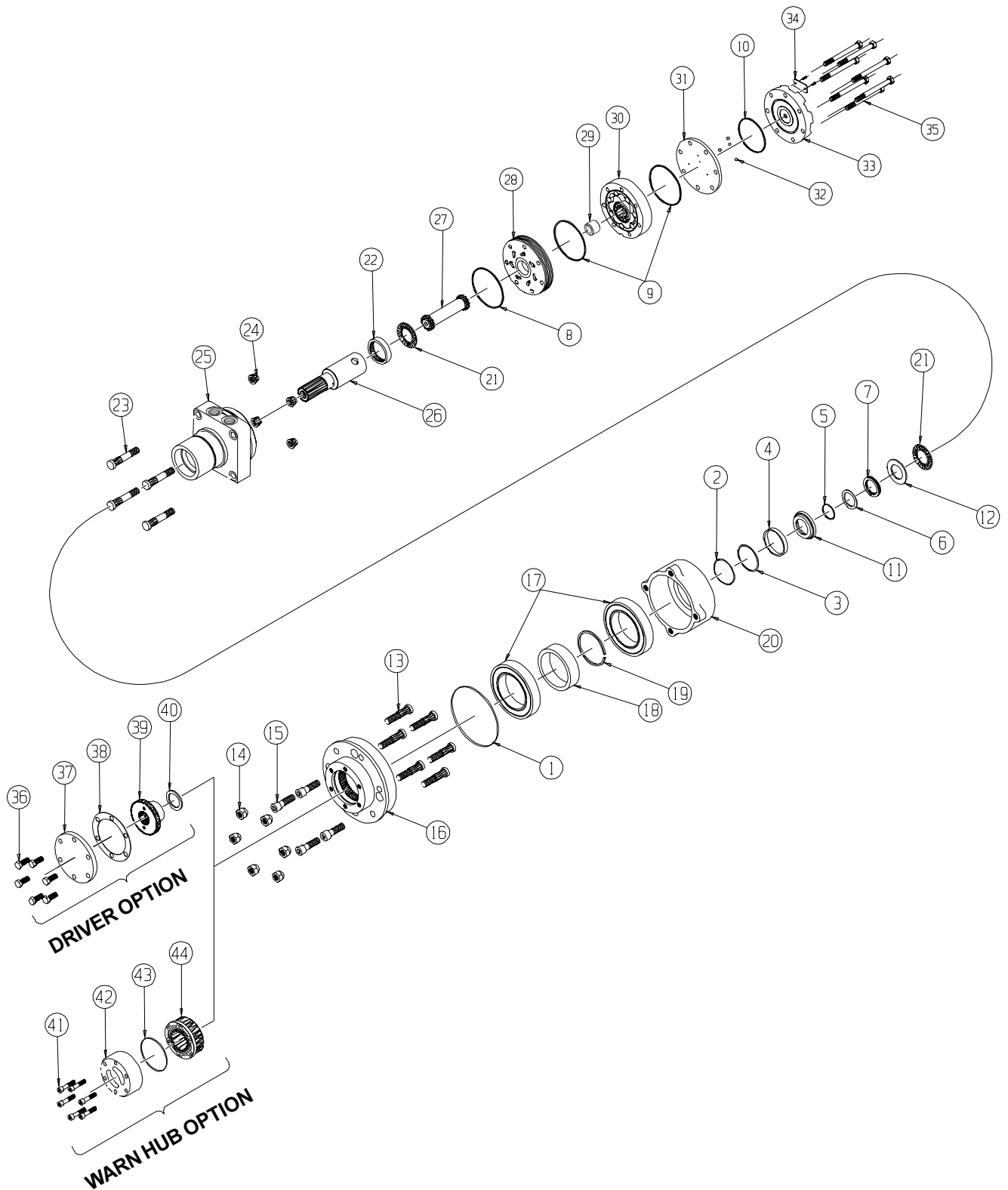
SHAFTS AND RELATED COMPONENTS KITS

SHAFT KITS COME WITH RELATED SHAFT COMPONENTS (i.e. keys, nuts, etc.)

TO ORDER INDIVIDUAL SHAFT COMPONENTS (i.e. keys, nuts, bolts, washers or wire rings) USE THE KIT NUMBER FOR EACH INDIVIDUAL PART.

| EXPLODED VIEW ITEM # | 27 | 28 | 29 | NOT SHOWN |
|----------------------|-----------|-----------|-----------|---------------|
| DESCRIPTION | SHAFT KIT | KEY KIT | NUT KIT | WIRE RING KIT |
| #31- 1-1/2" TAPERED | 500011216 | 500449105 | | --- |
| #22- 1-1/4" TAPERED | 500011217 | 500449101 | SEE MISC. | --- |
| #30- 1-1/2" STRAIGHT | 500011218 | 500449105 | ABOVE | 700449200 |
| #28- 35MM TAPERED | 500011310 | 500449104 | | --- |

RE (540) Series



RE (540) SERIES MOTOR COMPONENTS

SEAL KIT 500444125

| DESCRIPTION | EXP. VIEW ITEM # | KIT |
|--------------------|------------------|---|
| FLANGE SEAL | 1 | ITEMS # 1-10,38 INCLUDED IN SEAL KIT 500444125 |
| WIRE RING | 2 | |
| METAL BACKUP SHIM | 3 | |
| HIGH PRESSURE SEAL | 4 | |
| METAL BACKUP SHIM | 5 | |
| TEFLON BACKUP SEAL | 6 | |
| SHAFT SEAL | 7 | |
| REAR HOUSING SEAL | 8 | |
| BODY SEAL | 9 | |
| ENDCOVER SEAL | 10 | |
| PAPER GASKET | 38 | |
| SEAL CARRIER | 11 | ITEMS # 11-12 INCLUDED IN SEAL KIT 500444003 |
| THRUST WASHER | 12 | |

MISCELLANEOUS KITS

| DESCRIPTION | EXP. VIEW ITEM # | KIT |
|--------------------------------|------------------|-----------|
| STUD | 13 | 500018081 |
| LUG NUT | 14 | 500018151 |
| (4) CAPSCREWS | 15 | 500018086 |
| WHEEL FLANGE | 16 | 500013035 |
| 125MM BEARING | 17 | 500018095 |
| BEARING SPACER | 18 | 500018194 |
| THRUST RING | 19 | 500018062 |
| BEARING HUB | 20 | 500013055 |
| THRUST BEARING | 21 | 500018059 |
| REAR HOUSING BEARING | 22 | 500018002 |
| PLANETARY MOUNT STUD | 23 | 500018081 |
| MOUNTING NUT | 24 | 500018112 |
| FORWARD MANIFOLD (CCW OR "0") | 28 | 500015006 |
| REVERSE MANIFOLD (CW OR "1") | 28 | 500015007 |
| BALANCE PLATE (3 BALLS INCLD.) | 31 & 32 | 500012001 |
| STEEL BALL (3) | 32 | 500018048 |
| ENDCOVER | 33 | 500016001 |
| (6) DRIVER COVER SCREWS | 36 | 500018085 |
| DRIVER COVER | 37 | 700018001 |
| DRIVER | 39 | 500018179 |
| SPACER | 40 | 500018114 |
| LOCKING HUB ASSEMBLY | 41-44 | 500018099 |

ROTORS, DRIVE LINKS AND SPACERS, AND BOLTS

WHEN CHANGING MOTOR DISPLACEMENTS, A MATCHING ROTOR AND BOLT SET KIT MUST BE ORDERED. A NEW DRIVE LINK KIT MAY BE NECESSARY. DRIVE LINK SPACERS ARE INCLUDED IN DRIVE LINK KITS, BUT MAY ALSO BE ORDERED SEPERATELY BY USING THE DRIVE LINK SPACER KIT NUMBER.

| EXPLODED VIEW ITEM # | 30 | 30 | 27 | 29 | 35 |
|----------------------|--------------------|--------------------|----------------|-----------------------|--------------|
| DISPLACEMENT | STANDARD ROTOR KIT | FREETURN ROTOR KIT | DRIVE LINK KIT | DRIVE LINK SPACER KIT | BOLT SET KIT |
| 120 | 500087005 | 500087008 | 500014009 | --- | 500445006 |
| 160 | 500137005 | 500137011 | 500014009 | --- | 500445006 |
| 200 | 500167004 | 500167011 | 500014009 | 500018075 | 500445012 |
| 230 | 500147002 | 500147004 | 500014009 | 500018185 | 500445014 |
| 260 | 500227000 | 500227004 | 500014009 | 500018076 | 500445014 |
| 300 | 500247005 | 500247011 | 500014007 | --- | 500445018 |
| 350 | 500207000 | 500207004 | 500014008 | 500018076 | 500445026 |
| 375 | 500307005 | 500307011 | 500014008 | --- | 500445024 |
| 470 | 500357003 | 500357005 | 500014008 | 500018076 | 500445026 |
| 540 | 500407005 | 500407011 | 500014008 | 500018077 | 500445032 |
| 750 | 500607005 | 500607011 | 500014008 | 500018078 | 500445045 |

HOUSING KITS

(EXPLODED VIEW ITEM #25)

STANDARD HOUSING KITS INCLUDE REAR BEARING (#22) INSTALLED IN THE HOUSING.

| DESCRIPTION | HOUSING KIT |
|--------------------------------|-------------|
| #W31- SETBACK WITH 7/8" O-RING | 500131023 |

INTERNAL SHAFT

| EXPLODED VIEW ITEM # | 26 |
|----------------------|-----------|
| DESCRIPTION | SHAFT KIT |
| #24- 19 TOOTH SPLINE | 500011102 |