

J.K. FABRICATION, Inc..
HYDRAULIC MARINE EQUIPMENT
Exclusive Manufacturer of NORDIC Products
Email: jkfabrication@comcast.net
206-297-7400
Web site: jkfabrication.com

JK Fabrication's Emergency Tow Wire Storage Reel

Emergency Tow Wire Storage Reel 2016 Pricing



Part number: ESR-60-23-24 HE

Hot dipped galvanized frame with flame sprayed & epoxy coated drum \$31,900.00

Part number: A-36BP: (recommended)

One set blasted & primed weld down plates with grade 8 fasteners \$1,790.00

Part number PDU-10K Drive Unit To Spool Wire Onto Storage Reel

140 chain x 164 1/2", 140 B-11 sprocket, 10K Charlynn motor, motor mount \$3850.00

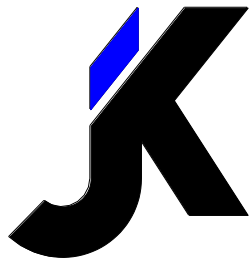
Spooling on wire rope onto storage reel. Labor only \$400.00

Work to be done at JK Fab, 2 employees – 3 hours

Install chain, motor mount and hook up to shop hydraulics to power wire rope onto storage reel

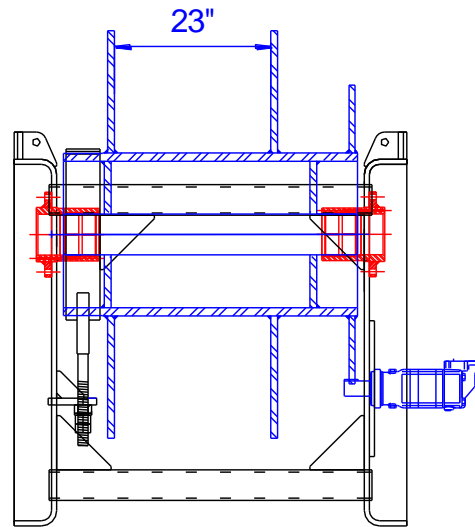
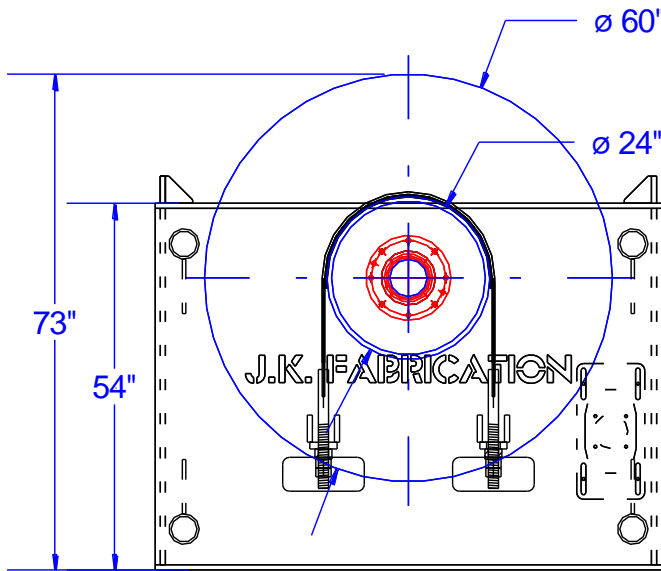
20HP hydraulic power unit: 230V 3 phase motor, includes starter \$8570.00

Does not include incoming or outgoing freight charges

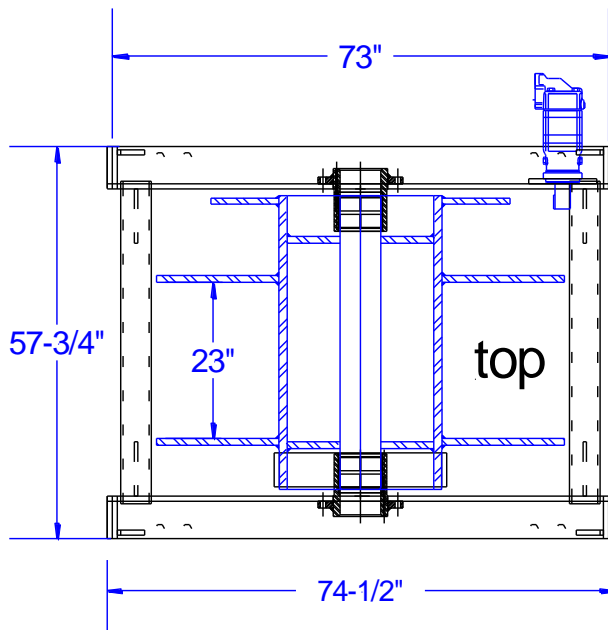


J.K. FABRICATION, Inc.
HYDRAULIC MARINE EQUIPMENT
Exclusive Manufacturer of NORDIC Products
Email: jkfabrication@comcast.net
206-297-7400
Web site: jkfabrication.com

JK Fabrication's Emergency Tow Wire Storage Reel



back



ADVANTAGES OF THE JK FABRICATION SYSTEM:

1. Large capacity of wire, as shown 1600ft of 1 $\frac{3}{4}$ ", 1200 ft. of 2", 900 ft. of 2 $\frac{1}{4}$ "
2. Unit can be made either smaller or larger to meet individual customers' needs
3. Designed and engineered to carry sufficient diameter wire to continue the tow
4. Reusable and transportable, can be moved from one barge or vessel to another
5. Constructed to outlast the barge
6. Can be mounted above or below deck or behind the bullwarks
7. Brake will apply sufficient tension to allow for all hookups before entire cable is Deployed
8. Wire can be lubed and covered to dramatically Reduce the effects of the marine environment.
9. Can also be mounted on the tug for storing The under rider.