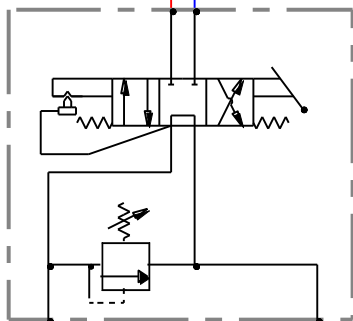
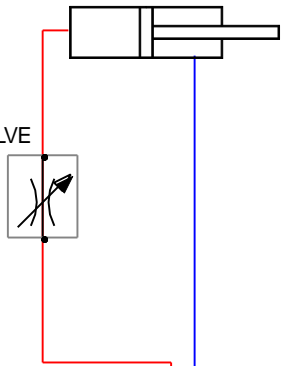
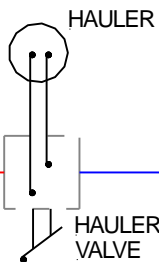


STRIPPER CYLINDER
1000 PSI MAX @ 1GPM
15SS1C24G8K

ADJ. NEEDLE VALVE
(IF REQ)



WALV 5D5 1-P (JG3)
111AL-AET-SKE
KICKOUT @ 910 PSI
OPEN SYSTEM
USE WITH FIXED
DISPLACEMENT PUMPS

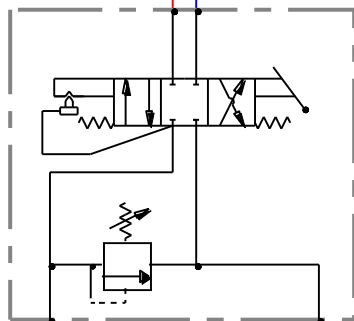
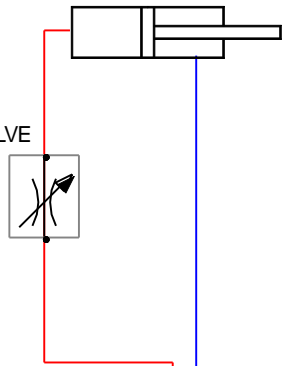


PRESSURE

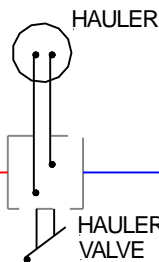
RETURN

STRIPPER CYLINDER
1000 PSI MAX @ 1GPM
15SS1C24G8K

ADJ. NEEDLE VALVE
(IF REQ)






WALV 5D5 1-P (JG3)
111AL-AET-SKE
KICKOUT @ 910 PSI
CLOSED SYSTEM
USE WITH VARIABLE
DISPLACEMENT PUMPS



PRESSURE

RETURN

GRAPHIC SYMBOLS LEGEND

SUPPLY PRESSURE LINE: 
RETURN PRESSURE LINE: 
ENCLOSURE LINE: 

JK FABRICATION INC.			
PH. 206-297-7400 (FAX 206-297-1300) SEATTLE WA			
MATERIALS	DRAWING LABEL		
	Fish Stripper Hydraulic Cylinder Layout		
DATE	BY	DWG NO.	REV
01-25-16			
QTY	SCALE	JOB	SHEET

